

# Whole Sport Plan 2009/13

Discussion DRAFT

May 2008

# Scene Setting

---

Vision & Values      Agreed in 2007

---

Club Questionnaire      Response 57 from 120 (95 open)  
Statement of current situation  
Target – Low/High

---

Conference      Group discussions, report

---

Focus x3      Articles, feedback from members

---

Member Input      On a variety of issues ie Talent Pathway

---

# Start - Strengths of O

---

**Sport for life**

**Healthy lifestyle**

---

**Participation**

**Character Building**

---

**International**

**Social**

---

**Outdoor adventure sport**

**Global sport**

---

**Age class competition**

**Volunteer ethos**

---

# Finish – Vision for 2013

---

## **2 Major programmes**

Grow & maintain participation

Sustainable podium success

---

## **Talent Pathway**

Clear, understood

---

## **Inclusive & accessible**

School O & Community O vibrant and translates into members

---

## **Volunteering**

Capacity meets needs

---

## **Financially self sufficient**

Generating alternative income

---

British Orienteering 2020 Vision

***“To be the Leading Orienteering Nation in the World”***

***“More People, More Places, More Podiums” (MP3)***

# Strategic Objectives

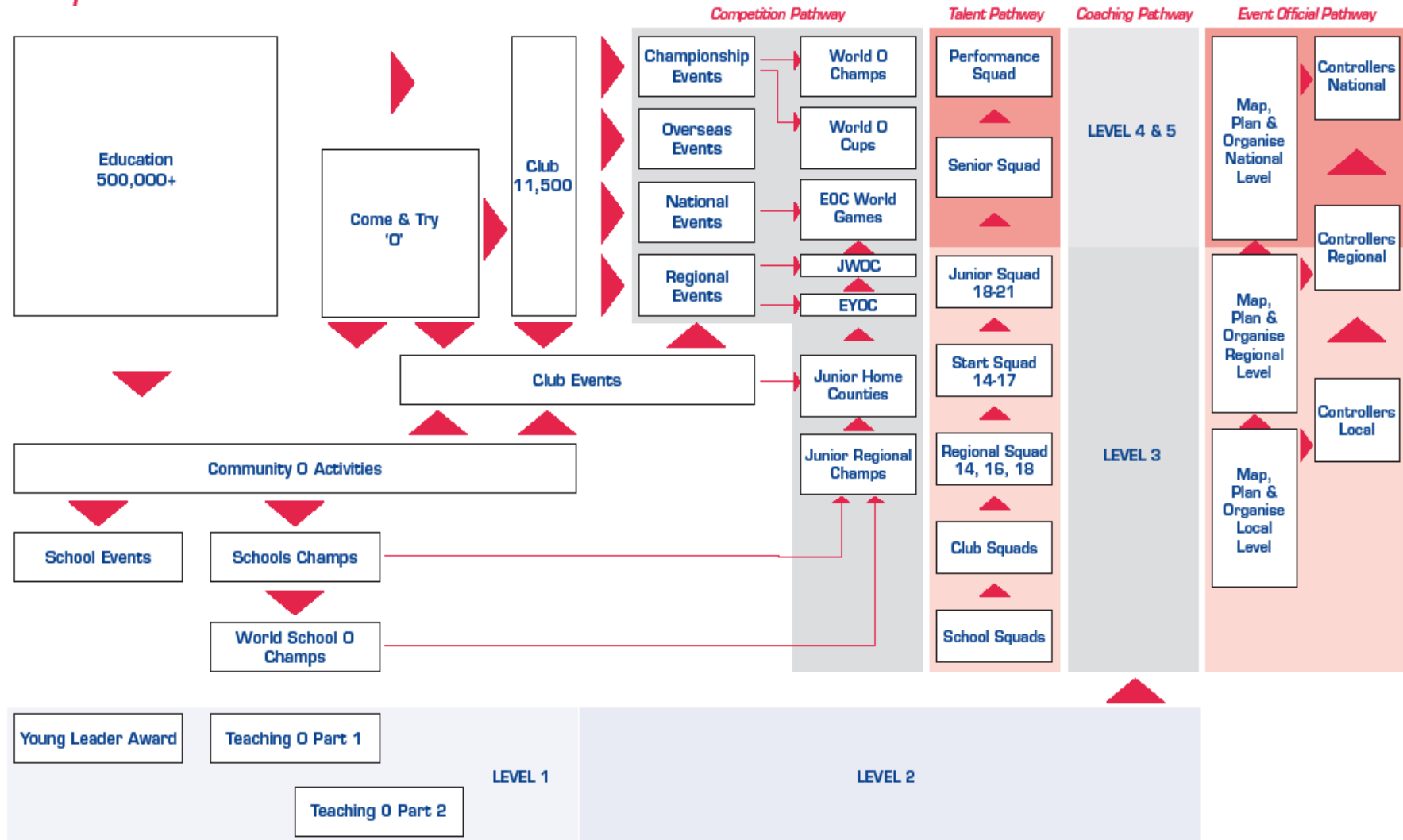
---

- Participation
- To increase participation by 20% over the period to March 2013
  - To increase membership by an equivalent 20% over the period to March 2013
- 

- Places
- To increase the number of maps used to stage 'traditional' orienteering events by 5% over the period of the Plan
  - To increase the number of places used for local, weekly orienteering activities by 20 per year
- 

- Podiums
- To increase the number of podium places in WOC and EOC to ?? by December 2013
  - To increase the medal places in World Orienteering Championships to ?? by December 2013
  - To develop a tool able to demonstrate improved individual performance ie Personal Bests
-

# Participation Model



# Development Programmes

---

School 'O'

School/club links, competition framework

---

FE/HE 'O'

FE/HE links to clubs, no of student members > 18

---

Community 'O'

Clubmark, Focus clubs, participation, activities,

---

Quality 'O'

Clubmark, events, participation, personal development, volunteering

---

Volunteering

Volunteer Coordinators, trainees, UKCC accreditations, other accreditations

---

# Volunteering

---

Induction

Outcomes, volunteer needs

---

E-Learning

Deliver knowledge and test

---

Workshops

Investigate issues benefited by group work/contact

---

Apprenticeships

Mentoring at club level

---

Recognition

Measuring & recognising competence by stealth!

---

Volunteer  
Coordinators

At club and regional association level

---

# More People, More Places

## Targets

---

Outcomes

eg no of school/club links

---

Process

eg effectiveness of volunteer training programmes

---

Baselines

Some determined, some to determine

---

Club/Assoc

Targets determined by clubs

---

'Driver'

Lead person, staff or volunteer

---



# More People, Changes (1) More Places

---

Local catchment areas; Local activities NOT events;  
welcoming; coach led; weekly; same meet; café/social

---

Local events – simple to organise, 1 or 2 people

---

Clear, understood Participation Pathway

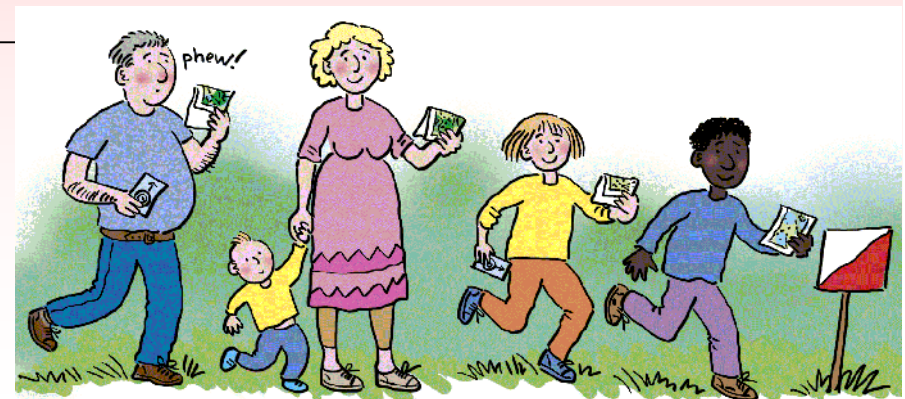
---

Personal development framework – Skill Structure

---

Value for money

---



# More People, More Places

## Changes (2)

---

Competition Pathway easily understood...

---

Regional events – easy to stage, inclusive

---

National events – quality, inclusive & friendly

---

Club as club not just an event organisation

---

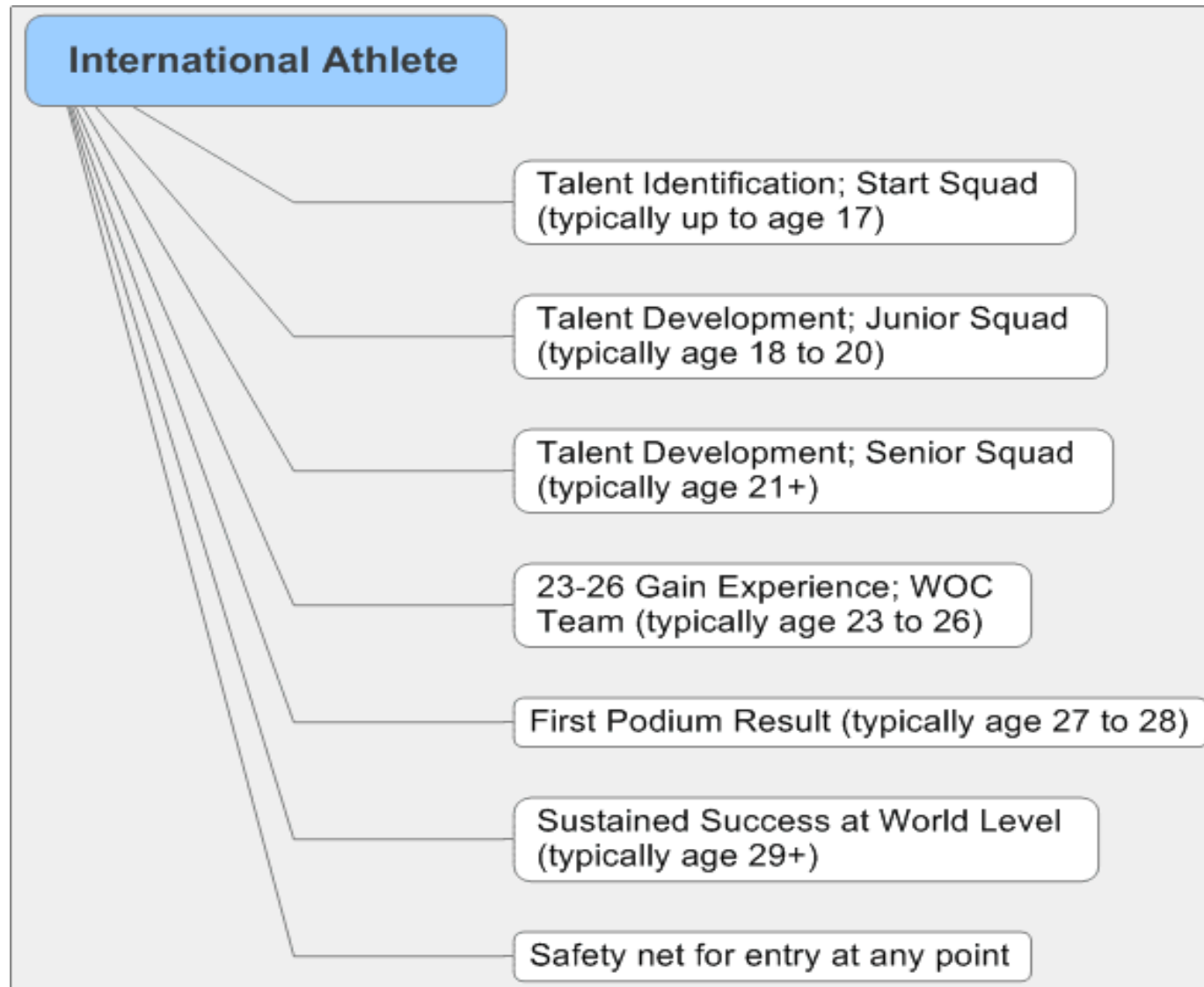
Training locally through apprenticeships,  
accreditations by 'stealth'

---

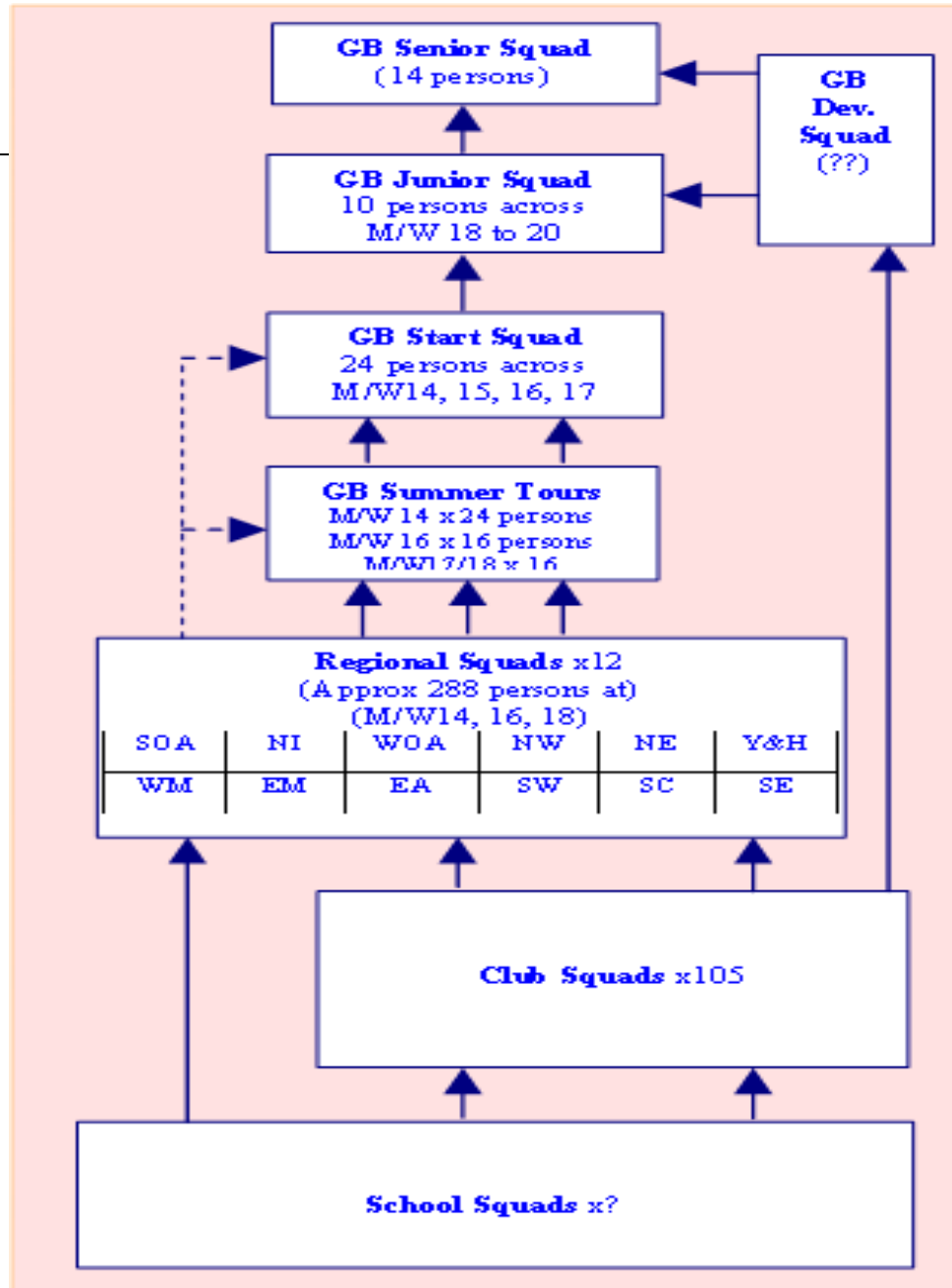
Value for money

---

# More Podiums



# Talent Pathway



# More Podiums      Changes (1)

---

Regional Squads

Identifying talent & potential

Development programme – based on Skills Structure

---

Skills Structure

Defining the 'whole athlete'

---

Talent Groups

Start: World Class  $\leq$  10 yrs

NOT age groups

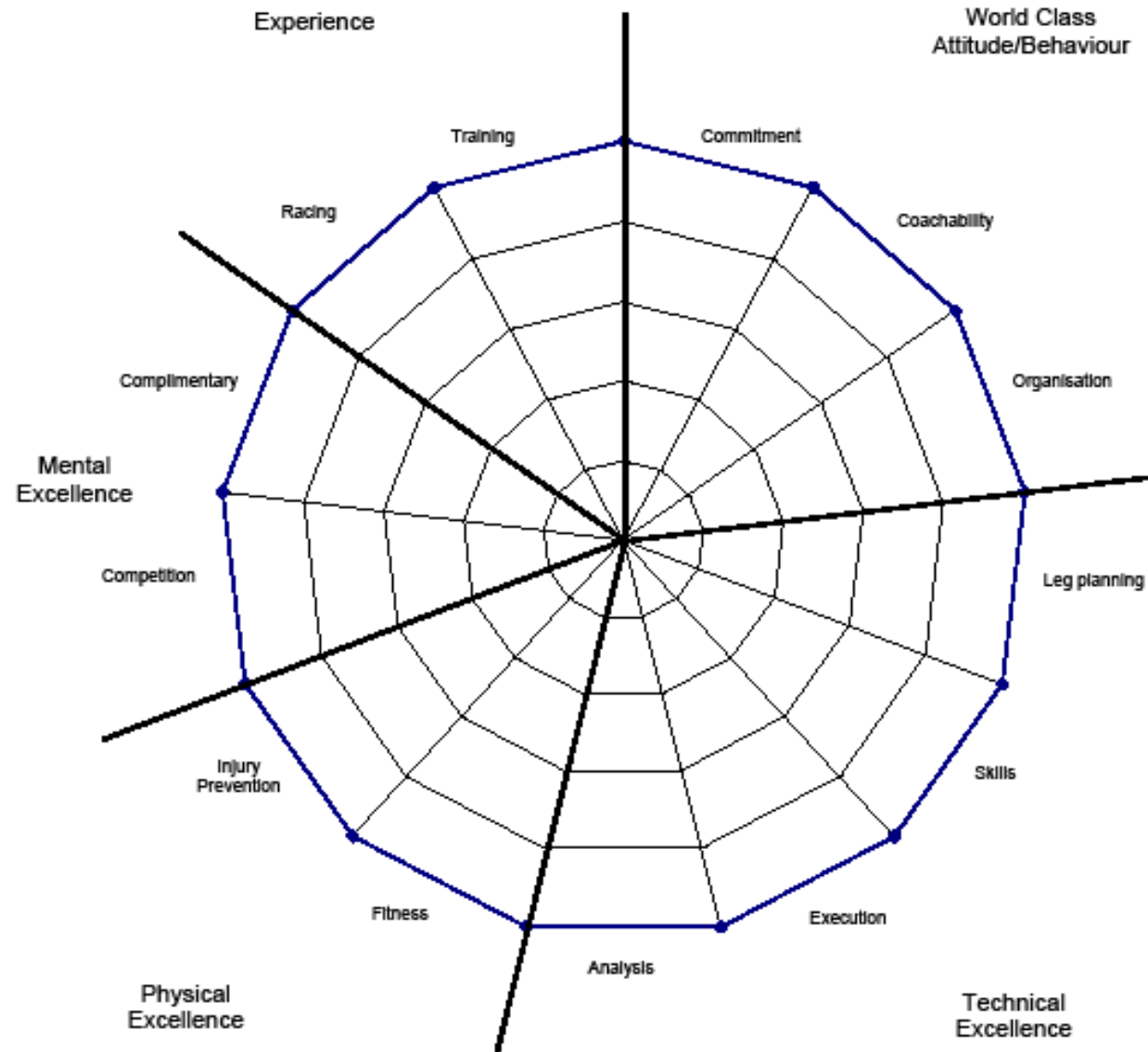
Potential: World Class  $\leq$  3 yrs

World Class – current podium

---

# World Class Orienteer – Performance Tool

---



## More Podiums      Changes (2)

---

Profiling

Based on longitudinal performance & 'case' conferences

---

SS/SM support

Re-establishing this support

---

Planning

Long term (3 to 10 years) as well as short term

---

Staff structure

Re-structured to meet programme needs & budget

---

Communications

Athletes, members, partners

---

International  
Committee

Role re-defined & re-vitalised

---

## Delivery Changes

---

### Club

Focus Clubs, targeted support (x9 per yr)

Development Plan aligned to WSP

Volunteer Coordinator – local personal development through ‘apprenticeship’

---

### Association

RDOs

Regional Squads

---

### National

Development Manager, Participation Manager, Development Officer/C&C Officer?

Event Manager?

Start & Potential Manager, Performance Director/Nat Coach

---

Support  
Programmes

Detailed strategies & Action Plans to  
address specific issues/topics

---

Business & Finance Including IT

---

Membership

Administration of scheme

---

Governance &  
Leadership

Providing strategic leadership, operational  
management, monitoring & evaluation

---

Marketing &  
Communications

'Selling' the Plan to members, generating new income  
streams

---

# Financing the Plan

---

BOF income

Work to increase other income streams

Programmes that should be funded by BOF income

---

Grants

Not known until Jan to March – challenging

Two types – WSP & projects

---

Hard choices

May be required in Jan-Mar 09

---

Risks

National Office

Staff structure

Implementing the WSP – delivery

---

# Issues to be addressed

---

Home Countries

Re-shaping the Plan to support HCs

---

'O' disciplines

Trail O, MBO, Ski O

---

Targets

Get agreement from committees

---

Budgets

Built to be flexible

---

Exec Summary

Easy reading

---

Appendices

Inc Club Dev Plan, evidence etc

---