

v1.0 New ISSprOM 2019-2 (24/01/22)

Dark Green added to colour table (CMYK 100-0-80-30)

New symbols 411, 501.2, 512.1, 512.3

Revisions to 709 hatch and boundary

Buildings now use Black 50%

(15/03/22) 417 enlarged to closely match ISSprOM change



-1.00 degrees

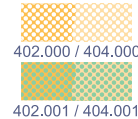


Scale 1 : 4000

Contours 2.5m

Symbols: **ISSprOM 2019**

Symbols modified away from ISSprOM 2019 spec:



404.000 Rough open land with scattered trees:

Modified to same Structure as 402.000 Open land with scattered trees

Similar adjustment for 404.001 Rough open land with scattered bushes
(dimensions allow precise enlargement for 3000)



417.000 Prominent large tree (note enlarged in ISSprOM 2019-2)

418.000 Prominent bush or small tree

418 Symbol modified with 0.33mm rather than 0.2mm white dot

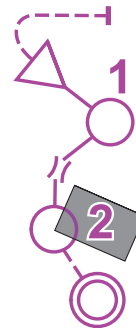
417 Symbol slightly enlarged for clearer differentiation relative to revised 418
(all revised dimensions allow precise enlargement for 3000)



522.001 Canopy (outline)

Alternative option for 0.14mm Black 60% outline rather than 0.10mm Black 100%

Also consider using no canopy outline where a building gap is narrow (0.4 - 1.0mm)



Course overprints:

Line thickness increased from 0.35 to 0.45mm for improved legibility over complex urban maps

701.000 Start

703.000 Control point

705.000 Line

706.000 Finish

707.000 Marked route

710.100 Crossing point

710.200 Crossing section

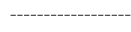
704.000 Control number

Recommendation is 4.5mm Bold (with optional 0.2-0.3mm white frame)

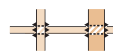
Symbols: **ISSprOM 2019-2**



411 Uncrossable Vegetation / Hedge - shall not be crossed: Dark Green



501.2 Step or edge of paved area at lower level



512.1 Bridge where it is passable underneath. If not passable underneath, use 515 Uncrossable Wall

512.3 Area passable at 2 levels



709.000 Out-of-bounds area

709.001 Out-of-bounds area with dashed line boundary

709.003 Out-of-bounds area with solid line boundary

Cross hatch spacing increased to 1.2mm. Cross hatch lines: 0.20mm. Boundary lines: 0.25mm.

Map based on LiDAR, aerial photography and on Ordnance Survey mapping
with the sanction of the Controller of Her Majesty's Stationery Office.

© Crown Copyright 2022 OS 100015287

© Environment Agency copyright 2022. All rights reserved.

Grid reference:

Possession of this map does not give right of access for orienteering
or for any other purpose. Permission must be obtained from the landowners

Printed map: © 2022, _____

Artwork: © 2022, _____

Survey and cartography by _____